



*SURFACES*



## *SURFACES*

A specialty division of FORM inc.  
offering custom cut to size, finished products.

- Quartz – color match
- Natural Stone – granite, marble, quartzite, onyx
- Companion Vanity Bases, Cabinetry
- Shower Doors – custom sizes
- Wood Barn Entry Doors
- Waterproof Art panels and surrounds

FORM Inc. 4054 DEAN MARTIN DR. LAS VEGAS, NV 89103  
Contact: [support@FormVegas.com](mailto:support@FormVegas.com) 702-804-1692



REV	AREA	DESCRIPTION	DATE	BY
2	VANITY	APPROVED FOR PRODUCTION 05.11.18	05.11.18	JS
3	VANITY	UPDATE MODULAR SWITCH SPECIFICATION	05.23.18	SK

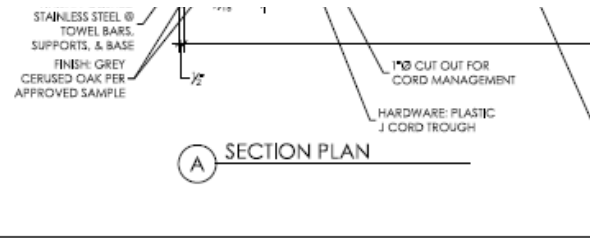
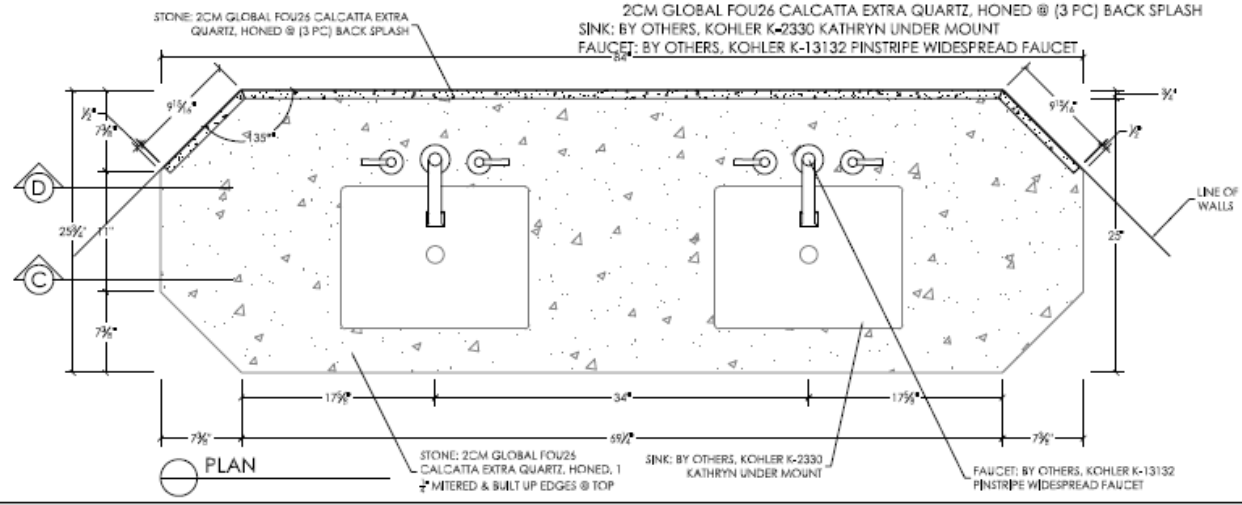
**NOTES:**  
 ITEM: VANITY - LIGHT WOOD  
 SPECIES: OAK  
 FINISH: GREY CERUSED OAK PER APPROVED SAMPLE;  
 POLISHED STAINLESS STEEL @ TOWEL BARS, SUPPORTS, & BASE  
 HARDWARE: 1/2" METAL LEGS WITH MOUNTING PLATE @ SUPPORTS;  
 1/2" X 1/2" METAL TUBE @ TOWEL BARS;  
 METAL WRAP @ BASE;  
 VELCRO @ REMOVABLE PANEL;  
 PLASTIC J CORD TROUGH  
 GLIDES/LEVELERS: HEAVY DUTY, ADJUSTABLE, SUITABLE FOR TILE  
 LIGHTING: HAFELE (2) 833.71.224 LOOK LED 2029, 3000K WARM WHITE, SURFACE MOUNT  
 LED STRIP: 833.73.766 EXTENSION LEAD; 833.89.093 MOTION DETECTOR; 833.89.090  
 LOOK SWITCH HOUSING, SURFACE MOUNT; 833.89.142 MODULAR SWITCH, LEAD;  
 833.74.900 LED 12V DRIVER WITH 833.89.017 POWER CORD  
 STONE: 2CM GLOBAL FOU26 CALCATTA EXTRA QUARTZ, HONED, 1 1/2" MITERED & BUILT UP  
 EDGES @ TOP;  
 2CM GLOBAL FOU26 CALCATTA EXTRA QUARTZ, HONED @ (3 FC) BACK SPLASH  
 SINK: BY OTHERS, KOHLER K-2330 KATHRYN UNDER MOUNT  
 FAUCET: BY OTHERS, KOHLER K-13132 FINSTRIFE WIDESPREAD FAUCET

PLEASE LOCATE ELECTRICAL

INSTALLER TO PROVIDE PROPER FASTENERS TO SECURE TO WALL

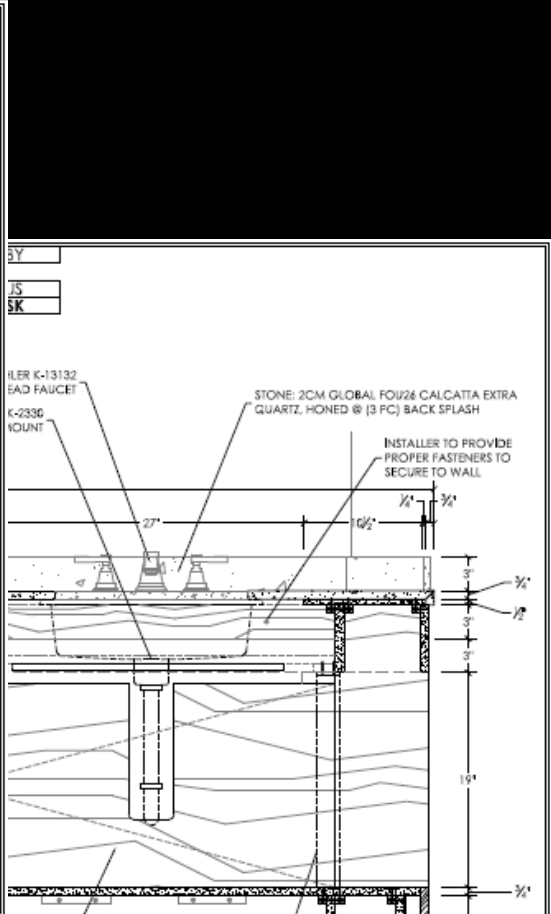
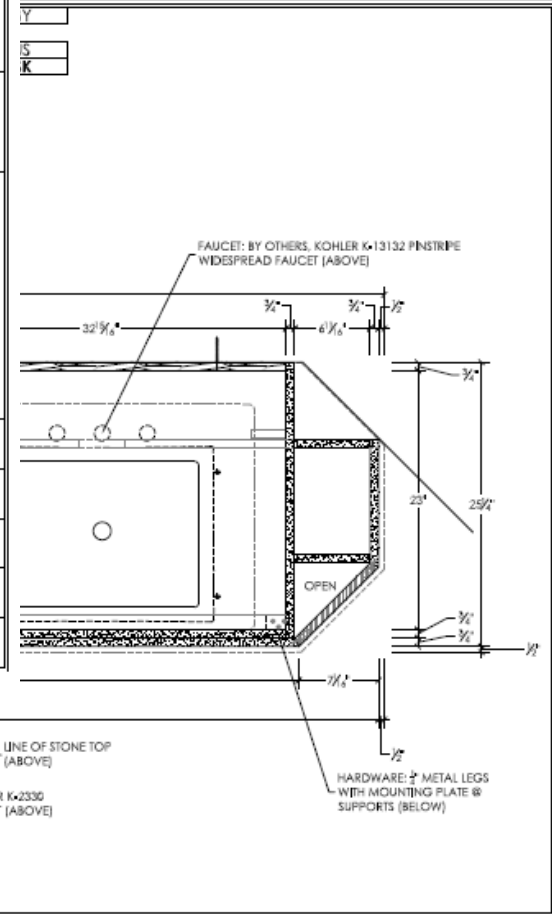
ALL METAL JOINTS TO BE WELDED & POLISHED SMOOTH (NO VISIBLE SEAMS)

HATCH PATTERNS ARE FOR GRAPHIC REPRESENTATION ONLY AND ARE NOT INDICATIVE OF YOUR APPROVED SAMPLES



DRAWN BY: \_\_\_\_\_  
 CHECKED BY: \_\_\_\_\_  
 DATE: \_\_\_\_\_  
 SCALE: NTS  
 JOB # \_\_\_\_\_  
 REVISION # 003  
 SHEET # 1 OF 9

Complete shop drawings of quartz and cabinetry, for seamless coordination and production



From slabs to full finished cut to size tops in with integrated manufacturing and fabrication facilities for stone, quartz, wood and metal production.





Prefabricated tops save material,  
time and labor costs.

Coordinated QA/QC production

Streamlined delivery and installation

